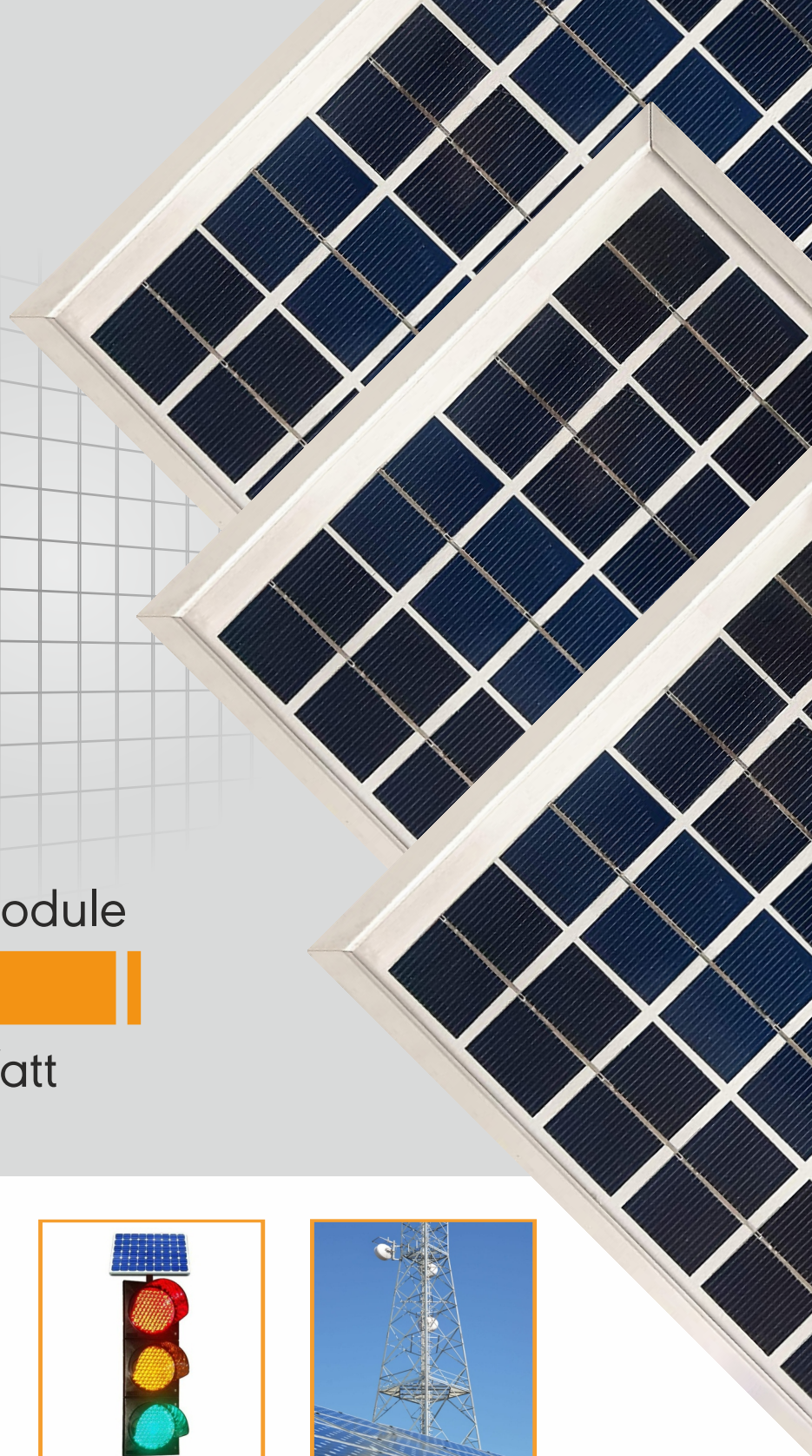


# navitas anora



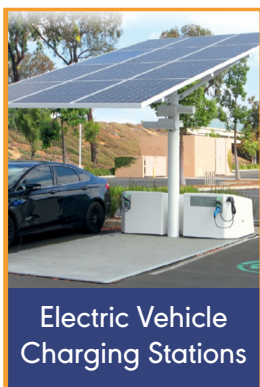
36 | 48 | 54 | 72 Cell Module

**Multi Crystalline Module**

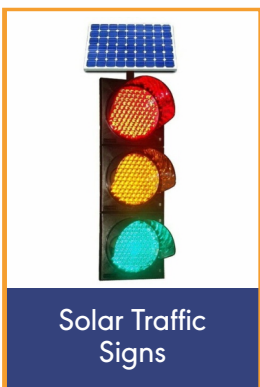
NS 10-250 | 10~250 Watt



Solar Water  
Pumps



Electric Vehicle  
Charging Stations



Solar Traffic  
Signs



Green Telecom  
Towers



Solar Lantern



Solar Street light



Solar Home Lighting



Rural Electrification

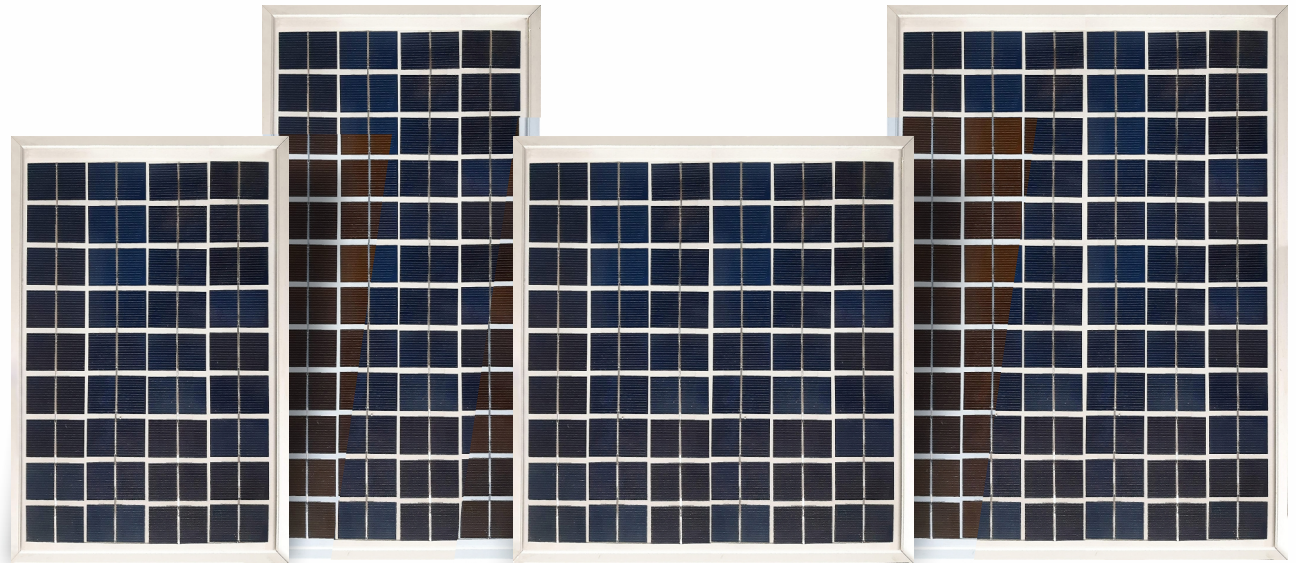
## ANORA Series

	10	20	40	50	60	65	75	80	100	110	120	125	130	150	165	220	225	250	
<b>Electrical</b>																			
Pmax (W)	10	20	40	50	60	65	75	80	100	110	120	125	130	150	165	220	225	250	
Voltage Vmax (V)	17.85	17.15	17.84	17.89	18.04	18.12	17.99	18.09	17.99	18.4	17.79	17.9	17.99	17.85	18.8	25.3	25.5	28.5	
Current Imax (A)	0.60	1.18	2.25	2.8	3.33	3.6	4.17	4.42	5.57	5.99	6.75	6.99	7.24	8.41	8.77	8.7	8.82	8.78	
Open Circuit Voltage (V)	21.65	21.44	21.95	21.77	21.66	22.13	22.12	22.40	21.84	22.78	21.58	21.65	21.8	22.58	22.8	31.2	31.4	34.7	
Short Circuit Current (A)	0.69	1.27	2.44	3.04	3.67	3.5	4.49	4.76	6.11	6.4	7.36	7.6	7.79	8.7	9.52	9.11	9.22	9.38	
Module Efficiency (%)	9.54 & 9.23	12.11	14.49	14.88	14.55	15.76	14.74	15.72	15.91	16.62	15.62	16.27	16.92	15.18	16.7	16.64	17.02	17	
Cable Characteristics	N.A	N.A	N.A	N.A	N.A	N.A	N.A	N.A	N.A	N.A	N.A	N.A	N.A	N.A	N.A	N.A	N.A	4 sqmm	
No. of Bypass Diodes	N.A	N.A	1	2	2	2	2	2	2	2	2	2	2	2	3	3	3	3	
<b>Mechanical</b>																			
Module Dimension (LXWXH) (mmXmmXmm)	295 or 305*355*17	465*355*17	415*665*34	505*665*34	620*665*34	765*665*34	945*665*34	995*665*34	1155*665*34	1485*665*34	1335*990*34	1485*990*35							
Mounting Hole Dio & X pitch and Y pitch (in MM)	5 mm round	5&330 &240	6*8&635 &240	6*8 &635&220	6*8&635&300	6*8 &635&500	6*8&635 &500	6*8&635 &500	6*8&635&600	6*8&635&600	6*8&960&600	8*12&945*600							
Weight (kgs)	1.15 & 1.18	1.95	3.25	4	5.1	5.75	7.3	7.68	8.8	11.27	15	16.7							
<b>PV Cell</b>																			
No. of Solar Cells	36	36	36	36	36	36	36	36	36	36	36	36	36	36	48	54	54	54	54
Cell Matrix	9*4	9*4	9*4	9*4	9*4	9*4	9*4	9*4	9*4	9*4	9*4	9*4	9*4	9*4	8*6	9*6	9*6	9*6	9*6
Quantity/pallet/Box	10 in 1	10 in 1	5 in 1	5 in 1	5 in 1	5 in 1	5 in 1	5 in 1	5 in 1	5 in 1	5 in 1	5 in 1	5 in 1	2 in 1	2 in 1	2 in 1	2 in 1	2 in 1	2 in 1

## ANORA Series

	ANORA	(24 V)	(24 V)	
<b>Electrical</b>				
Pmax (W)	150	165	220	225
Voltage Vmax (V)	35.7	37.84	50.6	51
Current Imax (A)	4.20	4.36	4.35	4.41
Open Circuit Voltage (V)	45.16	46.7	62.4	62.8
Short Circuit Current (A)	4.35	4.66	4.56	4.61
Module Efficiency (%)	15.18	16.7	16.64	17.02
Cable Characteristics	N.A	N.A	N.A	N.A
No. of Bypass Diodes	2	3	3	3
<b>Mechanical</b>				
Module Dimension (LXWXH) (mmXmmXmm)	1485*665*34	1335*990*34	1335*990*34	1335*990*34
Mounting Hole Dio & X pitch and Y pitch (in MM)	6*8&635&600	6*8&960&600	6*8&960&600	6*8&960&600
Weight (kgs)	11.27	15	15	15
<b>PV Cell</b>				
No. of Solar Cells	72	96	96	96
Cell Matrix	12*6	16*6	16*6	16*6
Quantity/pallet/Box	2 in 1	2 in 1	2 in 1	2 in 1

## Ideal for Off-Grid Applications



\* The above data is liable to change without prior notice. <sup>1</sup>Warranty applicable as per standard warranty terms as available on [www.navitassolar.com](http://www.navitassolar.com)

